

	<b>ASSET MANAGEMENT GUIDELINES</b>  <b>ASSETS</b>	Number: 2.3
		Revision: 1.0
		Date: 4/28/17

#### 1.0 PURPOSE:

The purpose of this procedure is to define assets and the process for prioritizing assets.

#### 2.0 SCOPE/DEFINITIONS:

This procedure applies to the departments involved in identifying equipment requiring maintenance and departments performing maintenance.

2.1 ASSET – Is an object relevant to the mission/business of the University that it is desirable to track work against for ANY one of the following reasons

2.1.1 For regulatory compliance

2.1.2 To ensure proper operation and reliability (i.e., maintain it), AND has a replacement value of \$1000 or more.

#### 3.0 RESPONSIBILITIES:

3.1 OPP personnel (technicians, planners, etc) who originate work orders are responsible to identify the asset on which work is required.

3.2 Planners are responsible for creating and maintaining asset records, and assigning priorities to assets.

3.3 Maintenance Engineering is responsible for

3.3.1 Coordinating the migration of asset data from capital projects to Maximo.

3.3.2 Maintaining classifications of assets

3.4 The Work Reception Center (WRC) Supervisor is responsible for ensuring work order requests initiated by non-OPP personnel identify the asset on which work is required.

#### 4.0 INSTRUCTIONS:

4.1 Where an existing asset is discovered that does not have a record in Maximo, a record can be created as follows:

4.1.1 Known information related to the asset shall be turned over to the Work Reception Center

4.1.2 The WRC shall create a draft asset record, create a field label, and initiate a work order to gather field data (such as serial number) from the asset, and apply the identification label. The work order shall be submitted to the Scheduling Team.

	<b>ASSET MANAGEMENT GUIDELINES</b>  <b>ASSETS</b>	Number: 2.3
		Revision: 1.0
		Date: 4/28/17

- 4.1.3 The work group assigned by Scheduling shall gather field data, apply the identification label, complete the work order, and submit all field data to the WRC.
- 4.1.4 The WRC shall forward all field data to the Planning Team.
- 4.1.5 The Planning Team shall complete the asset record information using field gathered data, assign an asset priority, create required maintenance job plans, create required maintenance PMs. When complete the record status shall be changed to "active."
- 4.2 Asset Identification Numbers shall be autonumbered by Maximo.
  - 4.2.1 A list of the legacy numbering schema that do NOT use autonumbered values is found in Attachment 5.3 of this section.
- 4.3 The asset criticality shall be determined using the Asset Criticality Ranking System and shall be based on the following considerations:
  - 4.3.1 Impact on health, safety or the environment
  - 4.3.2 Redundancy
  - 4.3.3 Impact on University mission
  - 4.3.4 Impact on University operations

## 5.0 ATTACHMENTS

- 5.1 List of Current Asset Classifications
- 5.2 Asset Modification Process Diagram
- 5.3 Asset Numbering Schema

### Revision History:

<u>Revision</u>	<u>Date</u>	<u>Description</u>
1.0	4/28/17	Initial Publication

	<b>ASSET MANAGEMENT GUIDELINES</b>  <b>ASSETS</b>	Number: 2.3
		Revision: 1.0
		Date: 4/28/17

## **List of Current Asset Classifications**

## **Attachment 5.1**

Assets – Given an asset record within Maximo

<b><u>Top Level</u></b>	<b><u>Second Level</u></b>	<b><u>Third Level</u></b>
Equipment Group	AED Devices	
Equipment Group	Air Conditioner	Rooftop
Equipment Group	Air Conditioner, EQ	
Equipment Group	Air Conditioner, EQ	Air Conditioner Unit
Equipment Group	Air Conditioner, EQ	Air Conditioner Unit
Equipment Group	Air Conditioner, EQ	Air Conditioner, Heat Pump
Equipment Group	Air Conditioner, EQ	Air Conditioner, Package Terminal
Equipment Group	Air Conditioner, EQ	Air Conditioner, Water Source Heat Pump
Equipment Group	Air Handler	Indoor Combo
Equipment Group	Air Handler	Outdoor Combo
Equipment Group	Alarm Point HFS only	
Equipment Group	Battery	Bank
Equipment Group	Blanket, EQ	Blanket-Fire
Equipment Group	Blower, EQ	Blower, Positive Displacement
Equipment Group	Boiler, EQ	Boiler, Cast Iron
Equipment Group	Boiler, EQ	Boiler, Fire Tube
Equipment Group	Boiler, EQ	Boiler, unknown type
Equipment Group	Boiler, EQ	Boiler, Water Tube
Equipment Group	Boiler, EQ	Electric
Equipment Group	Card Reader HFS only	
Equipment Group	Chamber, EQ	Chamber, Environmental Growth
Equipment Group	Chamber, EQ	Chamber, Environmental Growth
Equipment Group	Charger	Battery
Equipment Group	Chiller	Air Cooled Combo
Equipment Group	Chiller	Water Cooled Combo
Equipment Group	Chiller, EQ	Chiller, Absorption
Equipment Group	Chiller, EQ	Chiller, Centrifugal Compressor
Equipment Group	Chiller, EQ	Chiller, Reciprocating Compressor
Equipment Group	Chiller, EQ	Chiller, Screw Compressor
Equipment Group	Chiller, EQ	Chiller, Scroll Compressor
Equipment Group	Chiller, EQ	Chiller, Unkown Compressor
Equipment Group	Circuit Breaker	Frame Style
Equipment Group	Circuit Breaker	Molded Case
Equipment Group	Closed Loop, EQ	Chilled Glycol Closed Loop
Equipment Group	Closed Loop, EQ	Chilled Water Closed Loop
Equipment Group	Closed Loop, EQ	Chilled Water Closed Loop
Equipment Group	Closed Loop, EQ	Condenser Water Closed Loop

	<b>ASSET MANAGEMENT GUIDELINES</b>  <b>ASSETS</b>	Number: 2.3
		Revision: 1.0
		Date: 4/28/17

Equipment Group	Closed Loop, EQ	Dual Water Closed Loop
Equipment Group	Closed Loop, EQ	Heat Recovery Glycol Closed Loop
Equipment Group	Closed Loop, EQ	Heat Recovery Loop
Equipment Group	Closed Loop, EQ	Hot Glycol Closed Loop
Equipment Group	Closed Loop, EQ	Hot Water Closed Loop
Equipment Group	Closed Loop, EQ	Sweet Water Closed Loop
Equipment Group	Collector	Solar
Equipment Group	Collector, EQ	Dust
Equipment Group	Compactor	
Equipment Group	Compressed Air: Oil/Water Trap	
Equipment Group	Compressor	Centrifugal Combo
Equipment Group	Compressor	Screw Combo
Equipment Group	Compressor, EQ	Compressor, Air
Equipment Group	Condenser	Condenser Unit
Equipment Group	Condenser-Refrigerant, Air Cooled	
Equipment Group	Condensing Unit, Air Cooled	
Equipment Group	Condensing Unit, Water Cooled	
Equipment Group	Contactor, EQ	Street Light Contactor
Equipment Group	Cooler, EQ	Evaporative Cooler "Swamp Cooler"
Equipment Group	Cooling Tower	Counter Current Combo
Equipment Group	Cooling Tower, EQ	Cooling Tower
Equipment Group	Cooling Tower, EQ	Cooling Tower, Evaporative Condenser
Equipment Group	Cooling Tower, EQ	Cooling Tower, Evaporative Cooler
Equipment Group	Cooling Tower, EQ	Cooling Tower, Unknown Type
Equipment Group	Damper	Louver
Equipment Group	Dehumidifier, EQ	
Equipment Group	Dehumidifier, EQ	Dehumidifier, Desiccant
Equipment Group	Dehumidifier, EQ	Dehumidifier, Refrigerant
Equipment Group	Dehumidifier, EQ	Dehumidifier, Unknown Type
Equipment Group	Disconnect	Fused
Equipment Group	Disconnect	Switch
Equipment Group	Domestic/Household Refrigerator	
Equipment Group	Door	
Equipment Group	Door	Roll-Up Combo
Equipment Group	Drive	Variable Freq
Equipment Group	Driver, EQ	Driver, Electric Motor
Equipment Group	Driver, EQ	Driver, Engine
Equipment Group	Dryer	Air
Equipment Group	Dryer, Air, EQ	Dryer, Air, Desiccant
Equipment Group	Dryer, Air, EQ	Dryer, Air, Refrigerant
Equipment Group	Dryer, Air, EQ	Dryer, Air, Unknown Type

	<b>ASSET MANAGEMENT GUIDELINES</b>  <b>ASSETS</b>	Number: 2.3
		Revision: 1.0
		Date: 4/28/17

Equipment Group	Dryer, EQ	Laundry Dryer
Equipment Group	Elevator	Cable Combo
Equipment Group	Elevator	Hydraulic Combo
Equipment Group	Elevator, EQ	Elevator, Cable
Equipment Group	Elevator, EQ	Elevator, Dual Ropes Hydraulic
Equipment Group	Elevator, EQ	Elevator, Hand Operated
Equipment Group	Elevator, EQ	Elevator, Holeless Hydraulic
Equipment Group	Elevator, EQ	Elevator, Hydraulic
Equipment Group	Elevator, EQ	Elevator, Machine Room-less
Equipment Group	Elevator, EQ	Elevator, Mechanical Screw
Equipment Group	Elevator, EQ	Elevator, Telescoping Hydraulic
Equipment Group	Elevator, EQ	Escalator
Equipment Group	EMERGENCY PHONE	
Equipment Group	Evaporative Cooler "Swamp"	
Equipment Group	Evaporator	Unit
Equipment Group	Evaporator, EQ	Evaporator, Cooler
Equipment Group	Evaporator, EQ	Evaporator, Freezer
Equipment Group	Extinguisher-Fire, EQ	Extinguisher-Fire, CO2
Equipment Group	Extinguisher-Fire, EQ	Extinguisher-Fire, Deionized Water Mist
Equipment Group	Extinguisher-Fire, EQ	Extinguisher-Fire, Dry Chemical
Equipment Group	Extinguisher-Fire, EQ	Extinguisher-Fire, Foam
Equipment Group	Extinguisher-Fire, EQ	Extinguisher-Fire, Halon
Equipment Group	Extinguisher-Fire, EQ	Extinguisher-Fire, Metalux
Equipment Group	Extinguisher-Fire, EQ	Extinguisher-Fire, Purple K
Equipment Group	Extinguisher-Fire, EQ	Extinguisher-Fire, Water
Equipment Group	Extinguisher-Fire, EQ	Extinguisher-Fire, Wet Chemical
Equipment Group	Eyewash Station	Water Flush
Equipment Group	Fan	Axial Combo
Equipment Group	Fan	Centrifugal Combo
Equipment Group	Fan, EQ	Air Curtain
Equipment Group	Fan, EQ	Air Rotation Unit
Equipment Group	Fan, EQ	Fan Coil Unit
Equipment Group	Fan, EQ	Fan Filter Unit
Equipment Group	Fan, EQ	Fan, Air Handling
Equipment Group	Fan, EQ	Fan, Barrel
Equipment Group	Fan, EQ	Fan, Exhaust
Equipment Group	Fan, EQ	Fan, Heat & Vent
Equipment Group	Fan, EQ	Fan, Heat Recovery
Equipment Group	Fan, EQ	Fan, Return Air
Equipment Group	Fan, EQ	Fan, Roof Top Air Handling
Equipment Group	Fan, EQ	Fan, Supply Air
Equipment Group	Fan, EQ	Fan, Transfer Air

	<b>ASSET MANAGEMENT GUIDELINES</b>  <b>ASSETS</b>	Number: 2.3
		Revision: 1.0
		Date: 4/28/17

Equipment Group	Fan, EQ	Makeup Air
Equipment Group	Fan, EQ	Unit Ventilator
Equipment Group	Feeder	Chemical
Equipment Group	Filter	Bag
Equipment Group	Filter	Cartridge
Equipment Group	Filter	REVERSE OSMOSIS
Equipment Group	Filter, EQ	Filter, Air
Equipment Group	Filter, EQ	Filter, Air, Hepa
Equipment Group	Filter, EQ	Filter, Bag
Equipment Group	Filter, EQ	Filter, Closed Loop Chilled Water
Equipment Group	Filter, EQ	Filter, Condensate
Equipment Group	Filter, EQ	Filter, Non-Potable Water
Equipment Group	Filter, EQ	Filter, Oil Separator
Equipment Group	Filter, EQ	Filter, Potable Water
Equipment Group	Fireplace	
Equipment Group	Fixture, EQ	Street Light Fixture
Equipment Group	Freezer	Freezer, Chest
Equipment Group	Freezer	Freezer, Reach-In
Equipment Group	Freezer	Freezer, Upright
Equipment Group	Freezer	Freezer, Walkin
Equipment Group	Fryer, EQ	Heater, Domestic Water
Equipment Group	Furnace, EQ	Furnace, Unknown Type
Equipment Group	Generator	Nitrogen
Equipment Group	Generator, EQ	Generator, Emergency Power
Equipment Group	Generator, EQ	Generator, Emergency Power
Equipment Group	Grease Trap	
Equipment Group	Heat Exchanger	Plate
Equipment Group	Heat Exchanger	Shell & Tube
Equipment Group	Heat Exchanger, EQ	Boiler Economizer
Equipment Group	Heat Exchanger, EQ	Heat Exchanger, Air Cooled
Equipment Group	Heat Exchanger, EQ	Heat Exchanger, Plate & Frame
Equipment Group	Heat Exchanger, EQ	Heat Exchanger, Shell & Tube
Equipment Group	Heater	Unit Heater
Equipment Group	Heater	Water
Equipment Group	Heater, EQ	Heater, Cabinet Unit
Equipment Group	Heater, EQ	Heater, Cabinet Unit
Equipment Group	Heater, EQ	Heater, Convactor
Equipment Group	Heater, EQ	Heater, Domestic Water
Equipment Group	Heater, EQ	Heater, Domestic Water, Tankless Instantaneous
Equipment Group	Heater, EQ	Heater, Infrared Gas
Equipment Group	Heater, EQ	Unit Heater
Equipment Group	Heater, EQ	Unit Heater

	<b>ASSET MANAGEMENT GUIDELINES</b>  <b>ASSETS</b>	Number: 2.3
		Revision: 1.0
		Date: 4/28/17

Equipment Group	Hoist	Hydraulic
Equipment Group	Hoist	Manual
Equipment Group	Hoist, EQ	Hoist, Electric Motor
Equipment Group	Hoist, EQ	Hoist, Manual
Equipment Group	Hood	Fume
Equipment Group	Hose, EQ	Hose-Fire
Equipment Group	Humidifier, EQ	Electric
Equipment Group	Humidifier, EQ	Humidifier, Steam to Steam Generators
Equipment Group	Humidifier, EQ	Humidifier, Unknown Type
Equipment Group	Ice Machine	
Equipment Group	Induction Unit, Air	
Equipment Group	Kiln	
Equipment Group	Lab Dishwasher	Lab Dishwasher
Equipment Group	Lab Dishwasher	Lab Dishwasher
Equipment Group	Lab Dishwasher	Lab Dishwasher
Equipment Group	Lift	Scissor
Equipment Group	Lock	Dock
Equipment Group	Manhole, EQ	Steam Manhole
Equipment Group	Meter	Flow
Equipment Group	Monitor, EQ	MONITOR
Equipment Group	Open Loop, EQ	Condenser Water Open Loop
Equipment Group	Pager	
Equipment Group	Panel, EQ	Panel, Access Control
Equipment Group	Panel, EQ	Panelboard
Equipment Group	Panelboard	
Equipment Group	PDA	
Equipment Group	Power Supply	Uninterruptible
Equipment Group	Pump	Centrifugal Combo
Equipment Group	Pump	Diaphragm Elec Combo
Equipment Group	Pump	Submersible
Equipment Group	Pump, EQ	Pump, Ammonia
Equipment Group	Pump, EQ	Pump, Boiler Feed Water
Equipment Group	Pump, EQ	Pump, Chilled Water
Equipment Group	Pump, EQ	Pump, Circulation
Equipment Group	Pump, EQ	Pump, Condensate Return, Unknown Type
Equipment Group	Pump, EQ	Pump, Condensate Return-Duplex, Electric
Equipment Group	Pump, EQ	Pump, Condensate Return-Pressure Power
Equipment Group	Pump, EQ	Pump, Condenser Water
Equipment Group	Pump, EQ	Pump, Cooling Tower Water
Equipment Group	Pump, EQ	Pump, Domestic Cold Water
Equipment Group	Pump, EQ	Pump, Domestic Hot Water
Equipment Group	Pump, EQ	Pump, Domestic Water Booster

	<b>ASSET MANAGEMENT GUIDELINES</b>  <b>ASSETS</b>	Number: 2.3
		Revision: 1.0
		Date: 4/28/17

Equipment Group	Pump, EQ	Pump, Fire Water
Equipment Group	Pump, EQ	Pump, Glycol Solution
Equipment Group	Pump, EQ	Pump, Heat Recovery
Equipment Group	Pump, EQ	Pump, Heating & Cooling
Equipment Group	Pump, EQ	Pump, Hot Water
Equipment Group	Pump, EQ	Pump, Process Water
Equipment Group	Pump, EQ	Pump, Sewage
Equipment Group	Pump, EQ	Pump, Sump
Equipment Group	Pump, EQ	Pump, Sweet Water
Equipment Group	Pump, EQ	Pump, Transfer
Equipment Group	Pump, EQ	Pump, Vacuum
Equipment Group	Pump, EQ	Well Water Pump
Equipment Group	Radio	
Equipment Group	Refrigeration Unit, unknown Type	Refrigeration Unit
Equipment Group	Refrigeration Unit, unknown Type	Refrigeration Unit, Reach-in
Equipment Group	Refrigeration Unit, unknown Type	Refrigeration Unit, Walkin
Equipment Group	Regulator	Pressure
Equipment Group	Roofing	
Equipment Group	Safety Equipment	
Equipment Group	Safety Shower	
Equipment Group	Sampler	Gas
Equipment Group	Sensor, EQ	Sensor, Gas
Equipment Group	Sensor, EQ	Sensor, pH
Equipment Group	Sensor, EQ	Sensor, Temperature
Equipment Group	Sensor, EQ	Sensor, Temperature
Equipment Group	SOLAR	PV
Equipment Group	SPRINKLER SYSTEM, EQ	Dry
Equipment Group	SPRINKLER SYSTEM, EQ	Wet
Equipment Group	Steam Table	
Equipment Group	Steam Trap	
Equipment Group	Steam Trap, EQ	Steam Trap, Bucket
Equipment Group	Steam Trap, EQ	Steam Trap, Float & Thermostatic
Equipment Group	Steam Trap, EQ	Steam Trap, Orifice
Equipment Group	Steam Trap, EQ	Steam Trap, Thermodynamic
Equipment Group	Steam Trap, EQ	Steam Trap, Thermostatic
Equipment Group	Sterilizer	
Equipment Group	Switch	Electrical
Equipment Group	Switch, EQ	Sectionalizing Switch
Equipment Group	Switch, EQ	Sectionalizing Switch, AST
Equipment Group	Switch, EQ	Switch, Electrical Transfer



	<b>ASSET MANAGEMENT GUIDELINES</b>  <b>ASSETS</b>	Number: 2.3
		Revision: 1.0
		Date: 4/28/17

Equipment Group	Switchgear	
Equipment Group	Tank	Atmospheric
Equipment Group	Tank	Pressure Vessel
Equipment Group	Tank, EQ	BOILER BLOWDOWN SEPERATOR
Equipment Group	Tank, EQ	BOILER FEED TANK
Equipment Group	Tank, EQ	Deaerator Tank
Equipment Group	Tank, EQ	Slurry Tank
Equipment Group	Tank, EQ	Tank, Aboveground Storage, 100 Gallon
Equipment Group	Tank, EQ	Tank, Aboveground Storage, 1000 Gallon
Equipment Group	Tank, EQ	Tank, Aboveground Storage, 133 Gallon
Equipment Group	Tank, EQ	Tank, Aboveground Storage, 150 Gallon
Equipment Group	Tank, EQ	Tank, Aboveground Storage, 1700 Gallon
Equipment Group	Tank, EQ	Tank, Aboveground Storage, 172000 Gallon
Equipment Group	Tank, EQ	Tank, Aboveground Storage, 190 Gallon
Equipment Group	Tank, EQ	Tank, Aboveground Storage, 200 Gallon
Equipment Group	Tank, EQ	Tank, Aboveground Storage, 240 Gallon
Equipment Group	Tank, EQ	Tank, Aboveground Storage, 2500 Gallon
Equipment Group	Tank, EQ	Tank, Aboveground Storage, 275 Gallon
Equipment Group	Tank, EQ	Tank, Aboveground Storage, 2800 Gallon
Equipment Group	Tank, EQ	Tank, Aboveground Storage, 290 Gallon
Equipment Group	Tank, EQ	Tank, Aboveground Storage, 3000 Gallon
Equipment Group	Tank, EQ	Tank, Aboveground Storage, 350 Gallon
Equipment Group	Tank, EQ	Tank, Aboveground Storage, 400 Gallon
Equipment Group	Tank, EQ	Tank, Aboveground Storage, 41 Gallon
Equipment Group	Tank, EQ	Tank, Aboveground Storage, 440 Gallon
Equipment Group	Tank, EQ	Tank, Aboveground Storage, 480 Gallon
Equipment Group	Tank, EQ	Tank, Aboveground Storage, 500 Gallon
Equipment Group	Tank, EQ	Tank, Aboveground Storage, 5000 Gallon
Equipment Group	Tank, EQ	Tank, Aboveground Storage, 550 Gallon
Equipment Group	Tank, EQ	Tank, Aboveground Storage, 6,000 Gallon
Equipment Group	Tank, EQ	Tank, Aboveground Storage, 60 Gallon
Equipment Group	Tank, EQ	Tank, Aboveground Storage, 600 Gallon
Equipment Group	Tank, EQ	Tank, Aboveground Storage, 650 Gallon
Equipment Group	Tank, EQ	Tank, Aboveground Storage, 8000 Gallon
Equipment Group	Tank, EQ	Tank, Aoveground Storage, 300 Gallon
Equipment Group	Tank, EQ	Tank, Expansion
Equipment Group	Tank, EQ	Tank, Underground Storage, 10,000 Gallon
Equipment Group	Tank, EQ	Tank, Underground Storage, 1000 Gallon
Equipment Group	Tank, EQ	Tank, Underground Storage, 2000 Gallon
Equipment Group	Tank, EQ	Tank, Underground Storage, 290 Gallon
Equipment Group	Tank, EQ	Tank, Underground Storage, 3000 Gallon
Equipment Group	Tank, EQ	Tank, Underground Storage, 500 Gallon

	<b>ASSET MANAGEMENT GUIDELINES</b>  <b>ASSETS</b>	Number: 2.3
		Revision: 1.0
		Date: 4/28/17

Equipment Group	Tank, EQ	Tank, Underground Storage, 6000 Gallon
Equipment Group	Terminal	VAV
Equipment Group	Transformer	Dry
Equipment Group	Transformer	Liquid Filled
Equipment Group	Transmitter	Flow
Equipment Group	Tunnel	
Equipment Group	Ultra Violet Light Unit	
Equipment Group	Valve	Backflow Preventer
Equipment Group	Valve	Control
Equipment Group	Valve	Float Operated
Equipment Group	Valve	Relief
Equipment Group	Valve, EQ	Thermostatic Water Mixing Valve
Equipment Group	Valve, EQ	Valve, Back Flow Preventing Double Check
Equipment Group	Valve, EQ	Valve, Back Flow Preventing Reduced Pressure
Equipment Group	Valve, EQ	Valve, Back Flow Preventing Vacuum Breaker
Equipment Group	Valve, EQ	Valve, Control
Equipment Group	Valve, EQ	Valve, Safety Relief
Equipment Group	Variable Frequency Drive	
Equipment Group	VAV, EQ	VAV, Constant Volume
Equipment Group	VAV, EQ	VAV, Fan Powered Box
Equipment Group	VAV, EQ	VAV, Standard
Equipment Group	VAV, EQ	VAV, Variable Volume
Equipment Group	Water Fountain, EQ	Bottle Filling Station
Equipment Group	Water Fountain, EQ	Refrigerated Water Fountain
Equipment Group	Water Softener	
Equipment Group	Water, EQ	Distilled Water Unit
Equipment Group	Water, EQ	Reverse Osmosis Unit
Equipment Group	Water, EQ	Water Softener
Equipment Group	XFR, EQ	Dry Type Electrical Transformer
Equipment Group	XFR, EQ	FR3 Fluid Type Electrical Transformer
Equipment Group	XFR, EQ	Oil Type Electrical Transformer
Equipment Group	XFR, EQ	Rtemp Fluid Type Electrical Transformer
Equipment Group	XFR, EQ	Silicon Fluid Type Electrical Transformer
Equipment Group, Utilites	Belt, Vari-Drive	
Equipment Group, Utilites	Chain	
Equipment Group, Utilites	Compressor, Air	
Equipment Group, Utilites	Compressor, EQ_ULT	Compressor, Air
Equipment Group, Utilites	Condensate Station	
Equipment Group, Utilites	Conveyor	
Equipment Group, Utilites	Coupler, EQ_ULT	Coupling, Gear
Equipment Group, Utilites	Coupler, EQ_ULT	Coupling, Spider
Equipment Group, Utilites	Coupler, EQ_ULT	Coupling, Spring

	<b>ASSET MANAGEMENT GUIDELINES</b>  <b>ASSETS</b>	Number: 2.3
		Revision: 1.0
		Date: 4/28/17

Equipment Group, Utilites	Driver, Motor	
Equipment Group, Utilites	Driver, Turbine	
Equipment Group, Utilites	Expansion Joint	
Equipment Group, Utilites	Fan, EQ_ULT	Fan, Forced Draft
Equipment Group, Utilites	Fan, EQ_ULT	Fan, Induced Draft
Equipment Group, Utilites	Fan, EQ_ULT	Fan, Overfire
Equipment Group, Utilites	Fan, EQ_ULT	Fan, Reverse Air
Equipment Group, Utilites	Filter	
Equipment Group, Utilites	Fuel Tank	
Equipment Group, Utilites	Gear Box	
Equipment Group, Utilites	Gear Box	Belt, V
Equipment Group, Utilites	Generator	
Equipment Group, Utilites	Governor	
Equipment Group, Utilites	Hydrant, EQ_ULT	Fire Hydrant
Equipment Group, Utilites	Meter, EQ_ULT	Master Meter
Equipment Group, Utilites	Pump, EQ_ULT	Portable
Equipment Group, Utilites	Pump, EQ_ULT	Pump, Boiler Feed Water
Equipment Group, Utilites	Pump, EQ_ULT	Pump, Boiler Lube Oil
Equipment Group, Utilites	Pump, EQ_ULT	Pump, Brine System
Equipment Group, Utilites	Pump, EQ_ULT	Pump, Chemical
Equipment Group, Utilites	Pump, EQ_ULT	Pump, Clinker Grinder
Equipment Group, Utilites	Pump, EQ_ULT	Pump, Condensate Return
Equipment Group, Utilites	Pump, EQ_ULT	Pump, Cooling Tower
Equipment Group, Utilites	Pump, EQ_ULT	Pump, Potable Water
Equipment Group, Utilites	Pump, EQ_ULT	Pump, Reverse Osmosis
Equipment Group, Utilites	Sensor, EQ_ULT	Sensor, Fire Eye
Equipment Group, Utilites	Separator, EQ_ULT	Separator, Air
Equipment Group, Utilites	Spiking Station	
Equipment Group, Utilites	Steam Meter	
Equipment Group, Utilites	Steam Trap	
Equipment Group, Utilites	Stripper, EQ_ULT	Air Stripper
Equipment Group, Utilites	Switch, EQ_ULT	Switch, Flow
Equipment Group, Utilites	Switch, EQ_ULT	Switch, Level
Equipment Group, Utilites	Switch, EQ_ULT	Switch, Pressure
Equipment Group, Utilites	Transmitter, EQ_ULT	Transmitter, Flow
Equipment Group, Utilites	Transmitter, EQ_ULT	Transmitter, Level
Equipment Group, Utilites	Transmitter, EQ_ULT	Transmitter, Pressure
Equipment Group, Utilites	Turbidimeter	
Equipment Group, Utilites	Valve	Gas Valve
Equipment Group, Utilites	Valve	Valve, Control
Equipment Group, Utilites	Valve	Valve, Control
Equipment Group, Utilites	Valve	Water Valves

	<b>ASSET MANAGEMENT GUIDELINES</b>  <b>ASSETS</b>	Number: 2.3
		Revision: 1.0
		Date: 4/28/17

Equipment Group, Utilites	Welder	
---------------------------	--------	--

Non-Assets that have preventive maintenance requirements:

MAJMAINTCODE	Type of equipment/system/feature
01 - GENERAL	Drain Traps
01 - GENERAL	Tunnel Cleaning
01 - GENERAL	Bell Tower Cleaning
01 - GENERAL	Confidential Material in Rider 1
01 - GENERAL	Fall Protection System Inspection
01 - GENERAL	Diffuser Cleaning
01 - GENERAL	Dust Collector
03 - CONCRETE	Ramp Inspection
03 - CONCRETE	Paver Inspection
04 - MASONRY	Outdoor Masonry PM
05 - METALS	Sheet Metal Shop Shears
05 - METALS	Sheet Metal Shop Equipment
05 - METALS	Sheet Metal Shop Brakes
05 - METALS	Sheet Metal Shop Rolls
05 - METALS	Sheet Metal Shop Lock Formers
06 - WOODS & PLASTICS	Outdoor Carpentry PM
07 - THERM & MOISTURE	Bleachers
07 - THERM & MOISTURE	Gate
07 - THERM & MOISTURE	Building Roof PM Inspection Procedure
07 - THERM & MOISTURE	Glass patio roof
07 - THERM & MOISTURE	Building Roof PM Inspection Proc
08 - DOORS & WINDOWS	Window Wells
08 - DOORS & WINDOWS	Exterior/Interior Doors PM
08 - DOORS & WINDOWS	Greenhouse Doors PM
08 - DOORS & WINDOWS	Automated Window Maintenance
08 - DOORS & WINDOWS	Overhead Curtain Roller Motor Procedure
08 - DOORS & WINDOWS	Exterior/Interior Doors PM (Locksmiths)
08 - DOORS & WINDOWS	Overhead Doors PM (Locksmiths)
08A - DOORS&HARDWARE EXT	Exterior Door Inspection/PM
10 - SPECIALTIES	PSU Monument Sign Annual PM
10A - SIGNAGE (EXT)	We Are Sculpture Annual Buffing and Polishing
11 - EQUIPMENT	Wet Well
11 - EQUIPMENT	Diffuser Filters
11 - EQUIPMENT	Hair Dryers
11 - EQUIPMENT	Time Clock
11 - EQUIPMENT	AED Recall Survey
11 - EQUIPMENT	Bucket Truck Inspection
11 - EQUIPMENT	Spring/Fall time change for Clock

	<b>ASSET MANAGEMENT GUIDELINES</b>  <b>ASSETS</b>	Number: 2.3
		Revision: 1.0
		Date: 4/28/17

11 - EQUIPMENT	Lasch Building Terrace Rust Removal
11 - EQUIPMENT	PM Classroom & Equip (2nd Shift)
11 - EQUIPMENT	Spring/Fall time change for Old Main Clock
11 - EQUIPMENT	Forklift Inspection
11 - EQUIPMENT	Time Clocks for Weekend Shift
11 - EQUIPMENT	Debris Collection Device
11 - EQUIPMENT	NCAA Basketball Rim Testing Plan
11 - EQUIPMENT	Wash Bay
11 - EQUIPMENT	MP5000 Barricade
13A - ATHLETIC ROOMS	RapidShot Hockey Training System at Pegula
21 - FIRE EXTING SYS	Fire Extinguisher, Water Hydro Test PM
21 - FIRE EXTING SYS	FE Annual Inspection
21 - FIRE EXTING SYS	Sprinkler System Inspection and Flow Test
21 - FIRE EXTING SYS	FE Hydrostatic Testing
22 - PLUMB SYS & FIXTR	Tempered Water Valve (1 station)
22 - PLUMB SYS & FIXTR	Building Downspout Strainer Cleaning
22 - PLUMB SYS & FIXTR	Tempered Water Valve (2 stations)
22 - PLUMB SYS & FIXTR	Potable Water Filter Procedure
22 - PLUMB SYS & FIXTR	Drain Drip Legs
22 - PLUMB SYS & FIXTR	Clean Sump Pit
22 - PLUMB SYS & FIXTR	Showers and Restrooms
22 - PLUMB SYS & FIXTR	Plumbing Drains
22 - PLUMB SYS & FIXTR	Expansion Joints in Tunnels
22 - PLUMB SYS & FIXTR	Sewer Lines
22 - PLUMB SYS & FIXTR	Water temp. system for cattle
22 - PLUMB SYS & FIXTR	Wash Bays
22 - PLUMB SYS & FIXTR	Grease Trap Pumping
22 - PLUMB SYS & FIXTR	Water Filter Procedure
22 - PLUMB SYS & FIXTR	Jet drains
22 - PLUMB SYS & FIXTR	Parking Deck Seasonal Water Prep
22 - PLUMB SYS & FIXTR	Waterers & Water Troughs
22 - PLUMB SYS & FIXTR	Grease Trap Cleaning
22 - PLUMB SYS & FIXTR	Pre-season plumbing check
22 - PLUMB SYS & FIXTR	Drain lines
22 - PLUMB SYS & FIXTR	Outside Water On/Off Holding Barns
22 - PLUMB SYS & FIXTR	Sump Pump Test
22 - PLUMB SYS & FIXTR	Patio Drain Cleaning
22 - PLUMB SYS & FIXTR	Mill Steam Side PM
22 - PLUMB SYS & FIXTR	Fountain
22 - PLUMB SYS & FIXTR	Water Sculpture
22 - PLUMB SYS & FIXTR	Drain/sewer line
22 - PLUMB SYS & FIXTR	Sink clay traps

	<b>ASSET MANAGEMENT GUIDELINES</b>  <b>ASSETS</b>	Number: 2.3
		Revision: 1.0
		Date: 4/28/17

22 - PLUMB SYS & FIXTR	Sediment traps
22 - PLUMB SYS & FIXTR	Johnston Fan/Floor Drains
22 - PLUMB SYS & FIXTR	Plumbing Drains
22 - PLUMB SYS & FIXTR	Waterers & Water Troughs
22 - PLUMB SYS & FIXTR	Irrigation System Winterization
22 - PLUMB SYS & FIXTR	Irrigation System Spring Startup
22 - PLUMB SYS & FIXTR	Outdoor faucets
22 - PLUMB SYS & FIXTR	stadium Plumbing Walk Through mid
22 - PLUMB SYS & FIXTR	Kitchen Drain Cleaning 4 Drains
22 - PLUMB SYS & FIXTR	Oasis Garden Fountain Maint (WeeklyTreat&Check 1x)
22 - PLUMB SYS & FIXTR	Cooling Exchanger
22 - PLUMB SYS & FIXTR	Lint Traps
22 - PLUMB SYS & FIXTR	Potable Water Filter Procedure
22 - PLUMB SYS & FIXTR	Outside Water Feature Winterization
22 - PLUMB SYS & FIXTR	Main Sewer Line Rod out
22 - PLUMB SYS & FIXTR	Grease Bucket Strainer Basket Cleaning
22 - PLUMB SYS & FIXTR	Test Track Floor Drain Procedure
22 - PLUMB SYS & FIXTR	Rain Water Drain
22 - PLUMB SYS & FIXTR	Sink Box Solid Interceptor
22 - PLUMB SYS & FIXTR	Domestic Water PRV Strainer Cleaning
22 - PLUMB SYS & FIXTR	Outdoor Water Fountains
22 - PLUMB SYS & FIXTR	Green Roof Water Supply Winterization
22 - PLUMB SYS & FIXTR	Underground Roof Runoff Piping
22 - PLUMB SYS & FIXTR	Health and Human Dev Patio Weep Hole Cleaning
22 - PLUMB SYS & FIXTR	Dry Sprinkler System Drain Valve
22 - PLUMB SYS & FIXTR	Floor Ducts Cleaning
22 - PLUMB SYS & FIXTR	Sanitary Line PM
22 - PLUMB SYS & FIXTR	Drain Maint. Chemical Delivery
22 - PLUMB SYS & FIXTR	Air Line Blowdown
22 - PLUMB SYS & FIXTR	Outside Water Feature Spring Setupt
22 - PLUMB SYS & FIXTR	Concrete Trough & Drain Cleaning
23 - HVAC SYSTEMS	Exhaust Fan PM, Semi
23 - HVAC SYSTEMS	Visitor Center Effluent Water Strainer Cleaning
23 - HVAC SYSTEMS	Preheat Filters PM
23 - HVAC SYSTEMS	Supply Fan Lead/Lag PM; semi
23 - HVAC SYSTEMS	(gym) Div. Curtain
23 - HVAC SYSTEMS	Basketball goals
23 - HVAC SYSTEMS	Vibration Analysis Procedure
23 - HVAC SYSTEMS	Building Walk Thru Inspection, Grade 4
23 - HVAC SYSTEMS	Accompanying Elevator Inspector
23 - HVAC SYSTEMS	Inlet air screen
23 - HVAC SYSTEMS	AAALAC Survey Procedure

	<b>ASSET MANAGEMENT GUIDELINES</b>  <b>ASSETS</b>	Number: 2.3
		Revision: 1.0
		Date: 4/28/17

23 - HVAC SYSTEMS	Milking Parlor Equipment
23 - HVAC SYSTEMS	Convertor Rotation
23 - HVAC SYSTEMS	Steam Trap Inspection Procedure
23 - HVAC SYSTEMS	Unit Heater PM
23 - HVAC SYSTEMS	(residence hall) Hot Water Heat System Contract Procedure
23 - HVAC SYSTEMS	Pond Lab Office Ceiling Inspections
23 - HVAC SYSTEMS	Chiller
23 - HVAC SYSTEMS	Drain Condensate from air receiver
23 - HVAC SYSTEMS	Dryer Vent Pipe
23 - HVAC SYSTEMS	Variable Air Volume strainer
23 - HVAC SYSTEMS	Pathogen Digester Proc
23 - HVAC SYSTEMS	Dryer Vent Cleaning
23 - HVAC SYSTEMS	Variable Air Volume Box PM
23 - HVAC SYSTEMS	Exhaust Fans
23 - HVAC SYSTEMS	Fan Coil Contract PM
23 - HVAC SYSTEMS	Add Biocide to Campus Chilled Water Loop
23 - HVAC SYSTEMS	Chilled Water Fall Shutdown Planning/Coordination
23 - HVAC SYSTEMS	Greenhouse Roof Vent PM
23 - HVAC SYSTEMS	Greenhouse Sun Shade PM
23 - HVAC SYSTEMS	Weight Room PM
23 - HVAC SYSTEMS	Vibration Data Analysis Procedure
23 - HVAC SYSTEMS	Strainer Cleaning
23 - HVAC SYSTEMS	Dorm Mechanical Room Insp Contract PM
23 - HVAC SYSTEMS	CRAC Unit Exercise PM
23 - HVAC SYSTEMS	Dryer Vent Cleaning Contract PM
23 - HVAC SYSTEMS	Running Track Hydraulics
23 - HVAC SYSTEMS	PM Training Equipment
23 - HVAC SYSTEMS	Air Intake Chase
23 - HVAC SYSTEMS	Thermostat Battery Replacement
23 - HVAC SYSTEMS	Order replacement filters for RTUs
23 - HVAC SYSTEMS	West Campus Steam Trap Tag List & Locations
23 - HVAC SYSTEMS	Water Recycler PM Procedure
23 - HVAC SYSTEMS	Computer Building Controller Battery Replacement
23 - HVAC SYSTEMS	Steamer Table PM
23 - HVAC SYSTEMS	Ammonia Sensor PM
23 - HVAC SYSTEMS	Chilled Water Fall Shutdown Prep
23 - HVAC SYSTEMS	Raptor Controller Battery Replacement
23 - HVAC SYSTEMS	Air Intake CleanOut
23 - HVAC SYSTEMS	Chilled Water System Spring Startup Prep
23 - HVAC SYSTEMS	Pell Lab Daily Mech Room Walk
23E - HVAC REFRIG SYS	Ice Cream Freezer Inspection
25 - MECH SYS CONTRL	BAS ALC Humidity Sensor Testing Procedure

	<b>ASSET MANAGEMENT GUIDELINES</b>  <b>ASSETS</b>	Number: 2.3
		Revision: 1.0
		Date: 4/28/17

25 - MECH SYS CONTRL	BAS Stafea Humidity Sensor Testing Procedure
25 - MECH SYS CONTRL	Utility Network PM
25 - MECH SYS CONTRL	CCS Panel
25 - MECH SYS CONTRL	CCS Network UPS Procedure
25 - MECH SYS CONTRL	Health Services Refrigerator Sensor Inspection
25 - MECH SYS CONTRL	CCS Network Security Switch
26 - ELECTRICAL	Exterior Building Light Inspection
26 - ELECTRICAL	Steel Sculpture Care and Maintenance
26 - ELECTRICAL	Switchgear
26 - ELECTRICAL	Wells & Chlorine House Procedure
26 - ELECTRICAL	Projection Screen
26 - ELECTRICAL	Relamping
26 - ELECTRICAL	Relamping GP Classrooms
26 - ELECTRICAL	ASP Tanks
26 - ELECTRICAL	Fire Suppression Bank System Inspection
26 - ELECTRICAL	Capacitor Breaker
26 - ELECTRICAL	Fire Suppression System Test
26 - ELECTRICAL	Integrity Test Equipment Annual Calibration
26 - ELECTRICAL	Access Pit
26 - ELECTRICAL	Parking Deck Relamping
26 - ELECTRICAL	Building Illumination Check of Gym Light Levels
26 - ELECTRICAL	Snow & Ice Detector
26 - ELECTRICAL	Clock & Floodlights
26 - ELECTRICAL	UPS System Procedure
26 - ELECTRICAL	Electrical Grounding Clamp
26 - ELECTRICAL	High & Low Voltage Glove Re
26 - ELECTRICAL	Electric Heat Tape PM Procedure
26 - ELECTRICAL	Water Detector
26 - ELECTRICAL	Heat tape turn off
26 - ELECTRICAL	Kern Main Lobby Relamping
26 - ELECTRICAL	Electrical Panels
26 - ELECTRICAL	Athletic Fields Lighting
26 - ELECTRICAL	Athletic Fields Score/Sound
26 - ELECTRICAL	Fluorescent Tube Disposal Reminder
26 - ELECTRICAL	Panel IR Scan (2 hour)
26 - ELECTRICAL	Panel IR Scan (8 hour)
26 - ELECTRICAL	Raised Floor Diffuser Cleaning
26 - ELECTRICAL	Security Camera Procedure
26 - ELECTRICAL	Bulb/Ballast ReplacementStairwells
26 - ELECTRICAL	Ground Rod Testing
26 - ELECTRICAL	OPP Front Entrance Notification Button Test Proc.
26 - ELECTRICAL	Infrared Scan of Main Distribution Panels



	<b>ASSET MANAGEMENT GUIDELINES</b>  <b>ASSETS</b>	Number: 2.3
		Revision: 1.0
		Date: 4/28/17

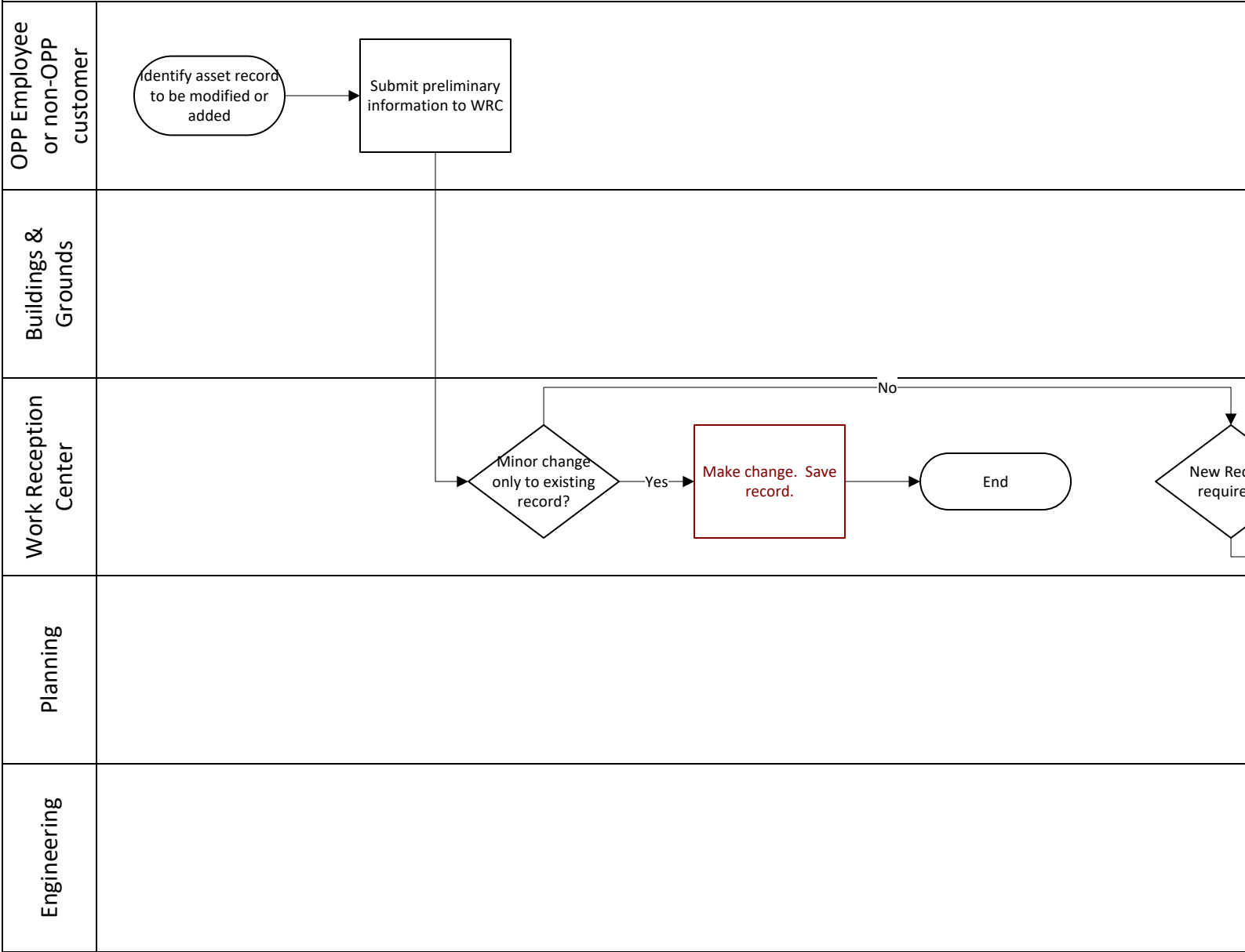
26 - ELECTRICAL	Old Main Rm 201, 203 and 208 Relamping
26 - ELECTRICAL	Door Well
26 - ELECTRICAL	Sound System Procedure
26 - ELECTRICAL	Television Checkout Procedure
26 - ELECTRICAL	Sprinkler Panel PM
26 - ELECTRICAL	Smoke Detector Procedure
26 - ELECTRICAL	Granite sitting area
26 - ELECTRICAL	Stadium Power System Function Test
26 - ELECTRICAL	Capacitor Breaker
26 - ELECTRICAL	Annual OPP Blackout Test
26 - ELECTRICAL	Replace Filters on Line Conditioners
28 - ELEC SYS CONTRL	Kitch Fire Suppression System Testing
28 - ELEC SYS CONTRL	Fire Suppression System Testing
28 - ELEC SYS CONTRL	Mateer Fire Suppression System Testing
28 - ELEC SYS CONTRL	Food Sciences Fire Suppression System Testing
28 - ELEC SYS CONTRL	Fire Alarm Testing Procedure 1
32 - EXTERIOR IMPROVEMENT	Garden Plots Winter/Spring Prep
32 - EXTERIOR IMPROVEMENT	Landscape Drain Procedure
32 - EXTERIOR IMPROVEMENT	Landscape Lockout Post Procedure
32 - EXTERIOR IMPROVEMENT	Landscape Maintenance
32 - EXTERIOR IMPROVEMENT	Irrigation System Winter/Spring Set_Up
32 - EXTERIOR IMPROVEMENT	Thompson Pond Cleaning
32 - EXTERIOR IMPROVEMENT	Mow Big Hollow Fields
32 - EXTERIOR IMPROVEMENT	Tree Cable Insp.
32 - EXTERIOR IMPROVEMENT	Tree Prop Insp.
32 - EXTERIOR IMPROVEMENT	Trail Tree Inspection
32 - EXTERIOR IMPROVEMENT	Trail Grooming
32 - EXTERIOR IMPROVEMENT	Trail Weed Control
32 - EXTERIOR IMPROVEMENT	Trail Mowing
32 - EXTERIOR IMPROVEMENT	Courtyard Maintenance
32 - EXTERIOR IMPROVEMENT	Installation/Removal of Midnight Clear sign
32 - EXTERIOR IMPROVEMENT	Flag Poles Rope Replacement
32 - EXTERIOR IMPROVEMENT	Safety Equipment in Landscape Shop
32 - EXTERIOR IMPROVEMENT	Detention Pond Grass Mowing
33 - UTILITIES	Electrical Vault
33 - UTILITIES	Battery Powered Emergency Light
33 - UTILITIES	Sanitary Sewer/Drain Lines
33 - UTILITIES	High Voltage Gear
33 - UTILITIES	Chlorine leak detector procedure
33 - UTILITIES	Battery Bank Procedure
33 - UTILITIES	Oil-Filled Generator Leak Check PM
33 - UTILITIES	Gas Line Odorization

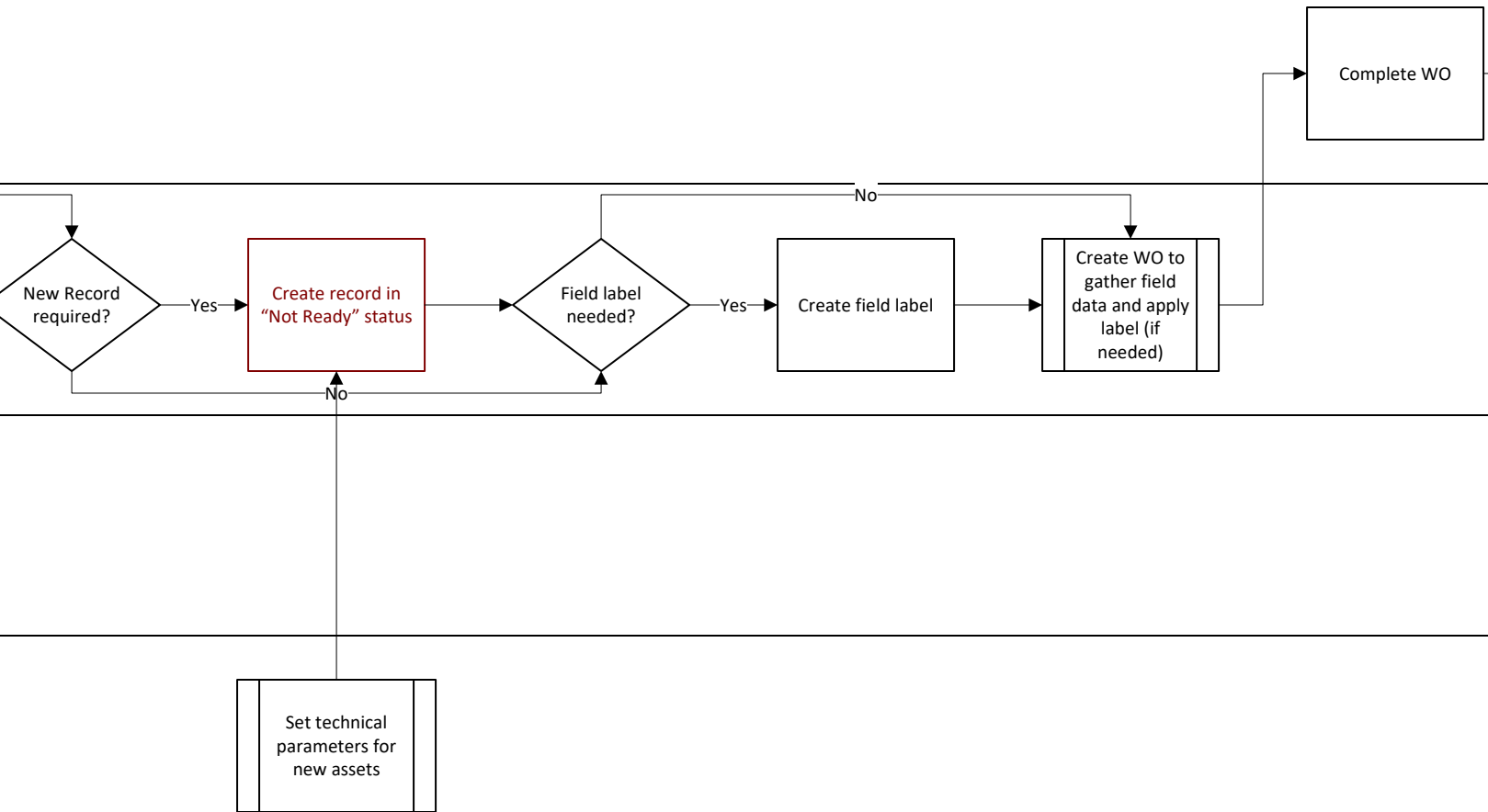
	<b>ASSET MANAGEMENT GUIDELINES</b>  <b>ASSETS</b>	Number: 2.3
		Revision: 1.0
		Date: 4/28/17

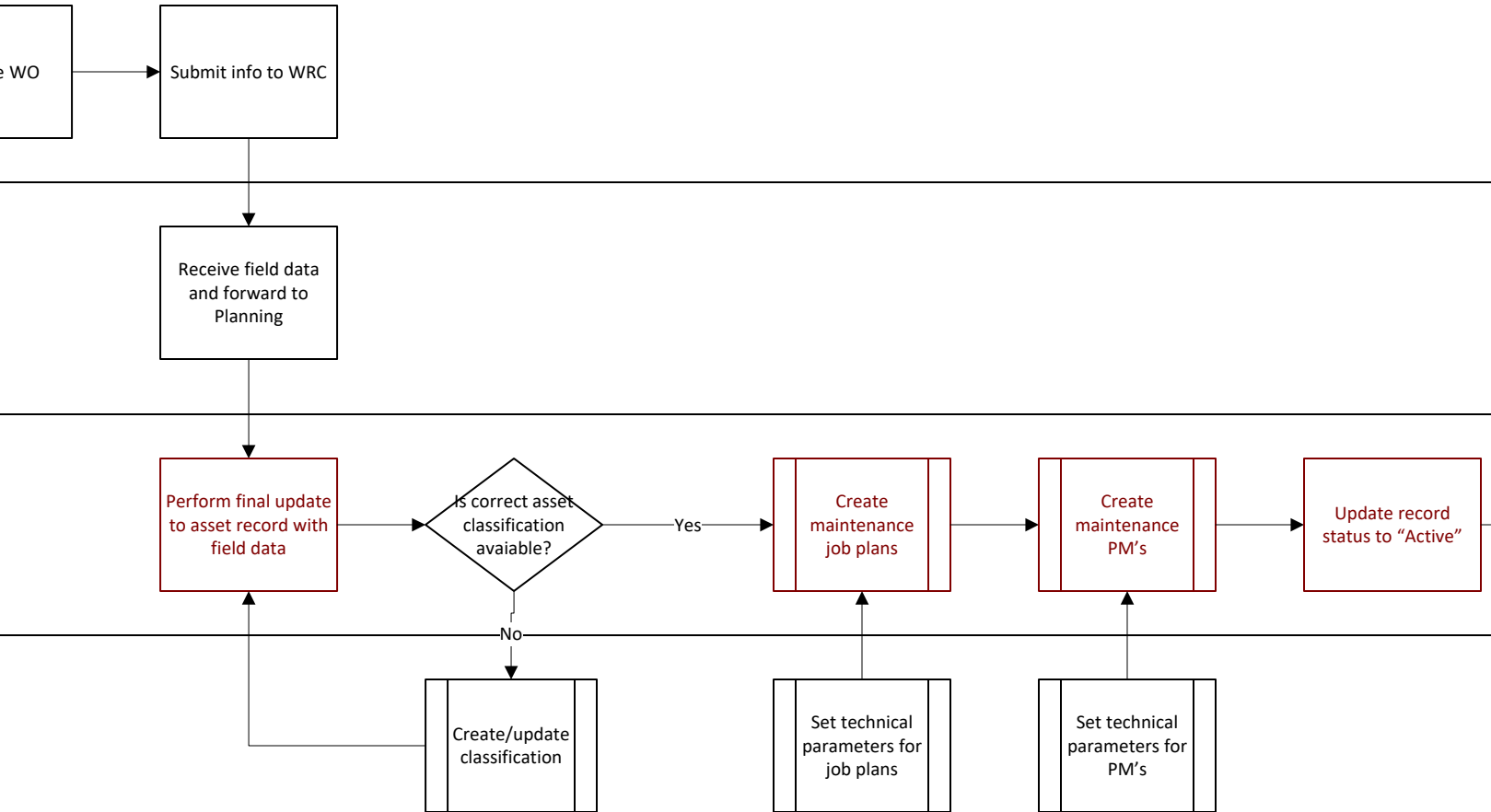
33 - UTILITIES	Check Buried Line Curtin Hall MM to East Halls
33 - UTILITIES	Gas Valve Inspection
33 - UTILITIES	Gas Service Piping Corrosion
33 - UTILITIES	Gas Ssystem Plan Review
33 - UTILITIES	Natural Gas System Leak Detection
33 - UTILITIES	Heath CGI Calibration
33 - UTILITIES	Streetlight Check
33 - UTILITIES	Cathodic Protection Natural Gas Survey
33 - UTILITIES	Drum Inspection by STMOPER (MONTHLY)
33 - UTILITIES	Annual Chemical Inventory Audit for ECSP
33 - UTILITIES	Streetlight Parent Workorder Plan
33 - UTILITIES	Netlink Plan
33 - UTILITIES	Load Interrupter Switch Procedure
33 - UTILITIES	Gas Line Patrolling
33 - UTILITIES	Class 2 Leak Recheck
33 - UTILITIES	Steam Tunnel DOT Inspection
33 - UTILITIES	Steam Meter
33 - UTILITIES	East Campus Steam Trap PM HRSG_ROside
33 - UTILITIES	Battery Replacement
33 - UTILITIES	Chilled Water Valves
33 - UTILITIES	Aboveground Storage Tank Insp by STMOPER (MONTHLY)
33 - UTILITIES	Condensate Station Job Plan
33 - UTILITIES	High Voltage Electrical Vault
33 - UTILITIES	Fire Hydrant PM
33 - UTILITIES	Water Valve PM
33 - UTILITIES	Selector Switch
33 - UTILITIES	ECSP Water Supply Line Testing
33 - UTILITIES	Fuel Oil Tank Mold/Bacteria Sampling PM
33 - UTILITIES	Septic Tank Pump
33 - UTILITIES	Cathodic Protection
33 - UTILITIES	Weekly Oil Inventory
33 - UTILITIES	Natural Gas System Leak Detection WCSP
33 - UTILITIES	Natural Gas System Leak Detection Columiba Gas supplied services
33 - UTILITIES	Meter/Backflow Device
33 - UTILITIES	Substation PM
33 - UTILITIES	East Campus Heating Plant Weekly Gas Compressor PM
33 - UTILITIES	Aboveground Storage Tank Insp by STMOPER (ANNUAL)
33 - UTILITIES	Annual Chemical Inventory Audit for WCSP

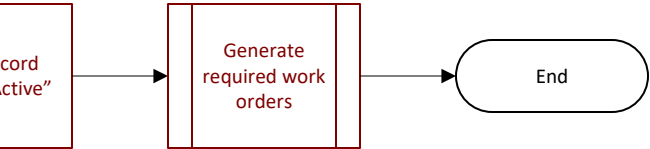
	<b>ASSET MANAGEMENT GUIDELINES</b> <b>ASSETS</b>	Number: 2.3
		Revision: 1.0
		Date: 4/28/17

Asset Record Modification









	<b>ASSET MANAGEMENT GUIDELINES</b> <b>ASSETS</b>	Number: 2.3
		Revision: 1.0
		Date: 4/28/17



			Example Record				
FORMAT	ASSET	NAMING SCHEMA	ASSET	DESCRIPTION	FAILURE CLASS	LOCATION	LOCATION DESCRIPTION
AED###	AED	A	AED001	AED, LOC: HALLWAY BY OPPSTORES, S/N: A14F-08234	AED	0904000	PHYSICAL PLANT BLDG
AP-###.##	ALARM POINT	L	AP-124.2	ALARM POINT, # AP-124.2, SHUNK, S STAIRWELL (E) DOOR	HFSAP	0231000	SHUNK HALL
CR-###-##.##	CARD READER	L	CR-201.01	CARD READER, # CR-201.01, F101 E VESTIBULE, CENTER EAST ENT	HFSCR	0201000	WATTS HALL
SAF-BS###	BEAM STRAP	A	SAF-BS0001	BEAM STRAP, S/N: 471160, OPP RENO	SAFETY	0193005	FOX HOLLOW BLDG
SAF-CB####	CARABINER	A	SAF-CB0050	CARABINER, S/N: 199857, 2ND SHIFT, VAN 185 D.R., BCM11	SAFETY	0904000	PHYSICAL PLANT BLDG
SAF-FH####	FALL HARNESS	A	SAF-FH0003	FALL HARNESS, S/N: 07.10.230024, AREA 2, POND, DAB134	SAFETY	0403000	POND LAB
SAF-LA####	LANYARD	A	SAF-LA0005	LANYARD, S/N: 1479661, AREA 1, PHYSICAL PLANT, RPN1	SAFETY	0904000	PHYSICAL PLANT BLDG
SAF-LL####	LIFELINE	A	SAF-LL111	LIFELINE, S/N: 645659, 003A ENGR UNIT B, AJE2	SAFETY	0306000-003A	ENG UNIT B-BSMT-AREA SHOP
SAF-RL####	RET. LANYARD	A	SAF-RL0033	RET. LANYARD, S/N: 250733, OPP RENO, PAP9	SAFETY	0193005	FOX HOLLOW BLDG
SAF-RG####	ROPE GRAP	A	SAF-RG0066	ROPE GRAP, S/N: 18447, JIM BAIRD, UTILITY CONSTR, MGC104	SAFETY	0994031	WWTP-LAB/OFC
SAF-TP####	TRIPOD	A	SAF-TP209	TRIPOD, S/N: NONE, SAFETY TRAILER #258, UTILITY CONSTR, MGC104	SAFETY	0994031	WWTP-LAB/OFC
00####	CLOSED LOOP	A	000001	CLOSED LOOP,CHILLED GLYCOL, 1100 GAL, 30% PG	CHILLEDGLYCOL	0001000-M011	OLD MAIN-BSMT-MECH RM
00####	OPEN LOOP	A	000012	OPEN LOOP,CONDENSER WATER	CONDNESERWATER	0003003-EM022	PATERNO LIBRARY-BSMT-MECH RM
OPP###	COMPACTOR	B	OPP152	COMPACTOR, 26 CU YD, # OPP152	COMPACTOR	0024000	MCALLISTER BLDG
OPP-###EC	WELDER	B	OPP-130EC	WELDER, # OPP-130EC	WELDER	0910000	EAST CAMPUS HEATING PLANT
STL-(2 LETTERS)	Street Light Contactor	D	STL-A	CONTACTOR,STREET LIGHT, SERIES # A, 60 AMP, 120 V, 120 V	STL	0943000	WEST CAMPUS CHILLER
STL-(2 LETTERS)#	Street Light Fixture	D	STL-A1	FIXTURE,STREET LIGHT, FIXTURE# A1	STL	0943000	WEST CAMPUS CHILLER
UPS###	UPS	A	UPS004	DESKTOP UPS004 23B CRAC UNIT CONTROLLERS	PANEL	0004000-023B	SHIELDS BLDG-GDFL-SRVR RM
ADW###	DISHWASHER	A	ADW001	DISHWASHER, LAB, # 001	ADW	0105000-015	BUCKHOUT LAB-BSMT-RES LAB SVC
ELV###	ELEVATOR	C	ELV001	ELEVATOR,CABLE, # 001	ELVCABLE	0403000	POND LAB
CO(size)#####	EXTINGUISHER-FIRE,CO2	A	C0500004	EXTINGUISHER-FIRE,CO2,5 LB (MECHANICAL ROOM 16 )	CO2	0243001	EWING HALL
COB#####	EXTINGUISHER-FIRE,CO2 BANK SYSTEM	A	COB07909	EXTINGUISHER-FIRE,CO2 BANK SYSTEM (11 )	CO2	0995030	FUEL STORAGE/PUMPS
D0(size)####	EXTINGUISHER-FIRE, DRY CHEMICAL	A	D0500001	EXTINGUISHER-FIRE, DRY CHEMICAL, 05 LB (TRUCK)	DRYCHEM	0037002	SALVAGE WAREHSE-WKSHOP
F(size)#####	EXTINGUISHER-FIRE, FOAM	A	F2501932	EXTINGUISHER-FIRE, FOAM, 2.5 GAL. (GARAGE)	FOAM	0166003	LANDS MGMT RES CTR-ENT ORN TURF
H(size)#####	EXTINGUISHER-FIRE, HALON	A	H0511122	EXTINGUISHER-FIRE, HALON, 05 LB (OSHKOSH 31)	HALON	0963013	AIRPORT-RESCUE & FIRE
M(size)#####	EXTINGUISHER-FIRE,CLASS D,30 LB	A	M3000001	EXTINGUISHER-FIRE,CLASS D,30 LB (LAB 435 )	METALUX	0050000	CHEMISTRY BLDG
P(size)#####	EXTINGUISHER-FIRE, PURPLE K	A	P0500400	EXTINGUISHER-FIRE, PURPLE K, 05 LB. (1ST LVL AREA)	PURPLEK	0962001	ST-EXP FOREST-LODGE
T(size)#####	EXTINGUISHER-FIRE, WET CHEMICAL	A	T0600450	EXTINGUISHER-FIRE, WET CHEMICAL, 6 LITER (R-135)	WETCHEM	0107001	ERICKSON FOOD SCIENCE BLDG
W(size)####	EXTINGUISHER-FIRE, WATER	A	W2500030	EXTINGUISHER-FIRE, WATER, 2.5 GAL. (12 B )	WATER	0001000	OLD MAIN
Z(size)#####	EXTINGUISHER-FIRE, DEIONIZED WATER MIST	A	Z2500100	EXTINGUISHER-FIRE, DEIONIZED WATER MIST, 2.5 GAL. (R6 )	DWM	0302000	ELEC ENG WEST BLDG
FBK#####	BLANKET,FIRE	A	FBK00901	BLANKET,FIRE	FIRE	0904000	PHYSICAL PLANT BLDG
HOS#####	HOSE,FIRE	A	HOS00150	HOSE,FIRE	FIREHOSE	0011000	EISENHOWER AUD
J#####	Janitorial Equipment	E	J001133	EXTRACTOR,SELF-CONTAINED	SELFCON	0965002-176	230 BLDG-GDFL-RES LAB
EMG###	GENERATOR	A	EMG001	GENERATOR,EMERGENCY POWER, THREE PHASE, # 001	EMG	0168004-E	MAIN DAIRY-BARN D (D-8), EXTERIOR EAST
LD#####	HOIST	C	LD0001	HOIST,MANUAL, 0.5 TON, # LD0001	MANUAL	0169002-030	VET RES CTR-ANIMAL DIAGNOSTIC LAB-01 FL-DEPT RES LAB

<u>FORMAT</u>	<u>ASSET</u>	<u>NAMING SCHEMA</u>	<u>ASSET</u>	<u>DESCRIPTION</u>	<u>FAILURE CLASS</u>	<u>LOCATION</u>	<u>LOCATION DESCRIPTION</u>
IU-###-#	INDUCTION UNIT	A	IU-201-1	INDUCTION UNIT, SIZE: 1800, CM- 26, FB- 09	IU	0039000-2	IST-INFORMATION SCIENCES & TECH-02 FL
ALC###	BAS Panel	H	ALC525	PANEL	PANEL	0653000	HLTH & HUM DEV EAST
LGR###	BAS Panel	H	LGR501-1	PANEL	PANEL	0501000	STEIDLE BLDG
RAD####	RADIO	K	RAD0035	RADIO, KEW PORTABLE, MOTOLOLA MT500, SPARE	RADIO	0904000-153	PHYSICAL PLANT BLDG- MEZZ-OPP SHOP SVC
ROF###	ROOF	J	ROF001	ROOF, SECTION# 001	ROOF	0001000-R	SECTION: ALL
STRP####	STEAM TRAP	F	STRP0008	STEAM TRAP,BUCKET, 1/2 IN, DRIP, _ID # 00008	BUCKET	0760000-M006	MUSIC II-BSMT-MECH RM
ETS###	Transfer Switch	G	ETS001	SWITCH,ELECTRICAL TRANSFER, # 001	ETS	0001000-022	OLD MAIN-BSMT-MECH RM
AST####	Aboveground Storage Tank	A	AST0011	TANK, ABOVEGROUND STORAGE, 1000 GALLONS, AST0011	TANK	0910004	NORTH CAMPUS CHILLED WATER PLANT
UST####	Underground Storage Tank	A	UST0001	TANK, UNDERGROUND STORAGE, 10000 GALLONS, 024	TANK	0904000	PHYSICAL PLANT BLDG
UVL###	ULTRA VIOLET LIGHT UNIT	A	UVL002	ULTRA VIOLET LIGHT UNIT, # 001	UVL	0125000-M002	MERKLE BLDG-BSMT- MECH RM
BF-B####	Backflow preventer, fire	A	BF-B00001	VALVE,BFP-DC, S/N 491599, BUILDING, FIRE, 4 ", 150#	BFP-DC	0319000-M109	LEONHARD BLDG-01 FL- MECH RM
BF-M####	backflow preveter, domestic	A	BF-M00001	VALVE,BFP-RPZ, S/N 970521323, MAIN, WATER, 4 ", 1 OF 3	BFP-RPZ	0001000	OLD MAIN
VB-B####	Vacuum breaker	A	VB-B00019	VALVE,VACUUM BREAKER, AIR GAP, BUILDING, FAUCET, # VB-B00019	VB	0006000-128	EISENHOWER CHAPEL-01 FL-MTG RM
BFS####	Bottle Filling Station	A	BFS001	WATER FOUNTAIN,BOTTLE FILLING STATION, # 001, NEAR RM 308	BFS	0701000-Q302	SPARKS BLDG-03 FL- CORRIDORS
REFRIG###	WATER FOUNTAIN	A	RWF001	WATER FOUNTAIN,REFRIGERATED, BY THE ELEVATOR	REFRIG	0411000-G	ALTHOUSE LAB-GDFL
DSL###	Still	A	DSL001	WATER,DISTILLED WATER UNIT, # 001	DSL	0028000-M301	RESEARCH EAST-ROOF- MECH RM
ROS###	RO Unit	A	ROS001	WATER,REVERSE OSMOSIS UNIT, # 001	ROS	0035000-Y001	EARTH & ENGINEERING SCIENCES BLDG-BSMT- LOADING DOCK
WTS####	Water Softener	A	WTS001	WATER,WATER SOFTENER, # 001	WTS	0002000-M005	SCHWAB AUDITORIUM- BSMT-MECH RM
1###	Transformer	A	1000	XFR,OIL, KVA 50 V, PRI 7200 V, SEC 120/240 V	OIL	0037000	PROCUREMENT SVCS
						rev.	7/30/2015
			<b>Type</b>	<b>Description</b>			
			A	Assign the next available number in the sequence			
			B	Assigned by OPP Garage			
			C	Assigned by Elevator Supervisor			
			D	Assigned by Utilites			
			E	Assigned by Janitorial Admin			
			F	Assigned by Steam Trap Group at system inventory			
			G	Assigned by Electrical Integrity Group			
			H	Assigned by the Electronics Group			
			J	Assigned by Planning & Estimating			
			K	Created using Serial Number from Radio			
			L	Provided by owners of the assets			